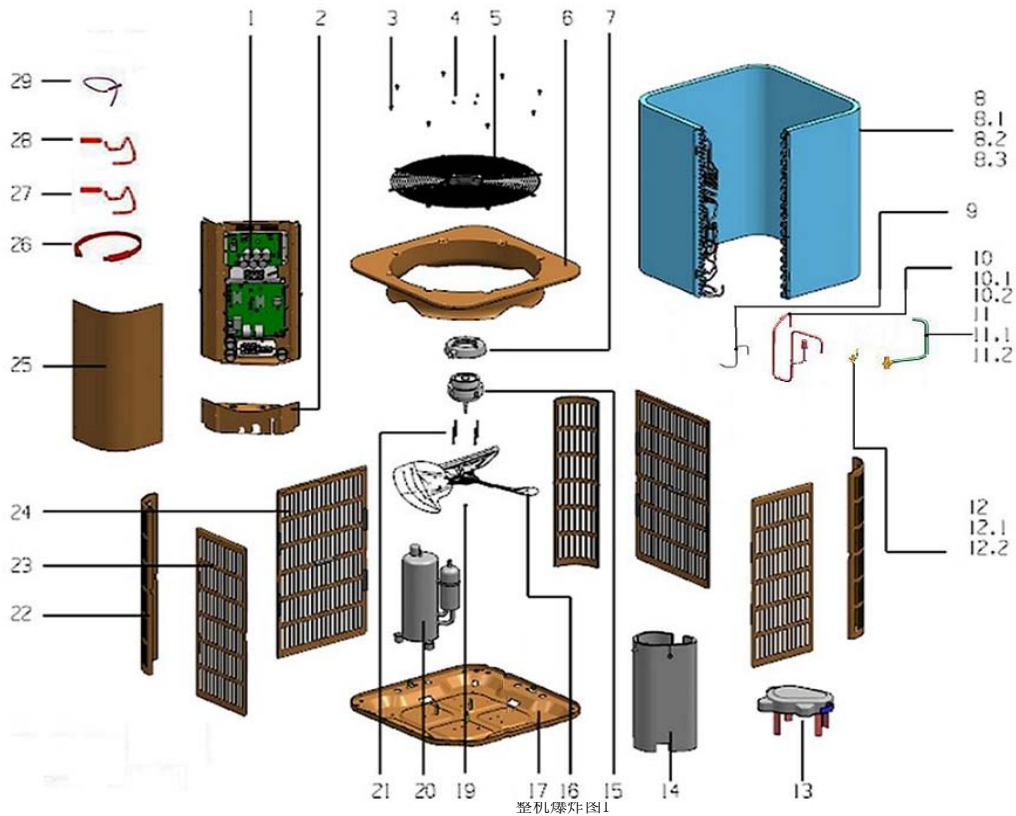
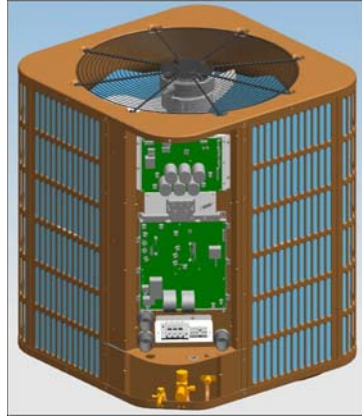
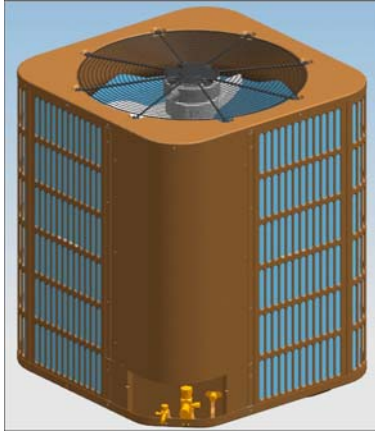
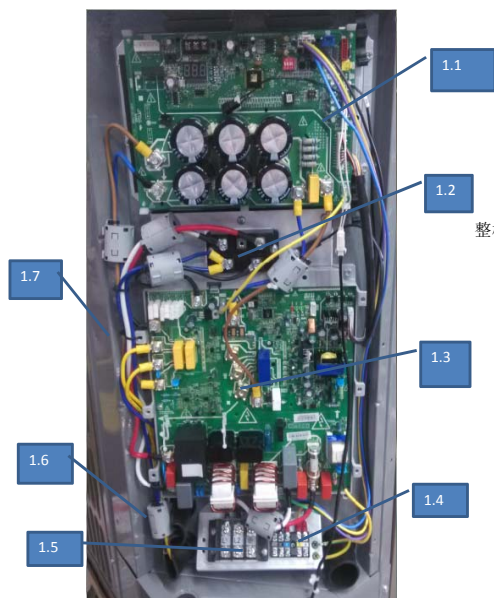
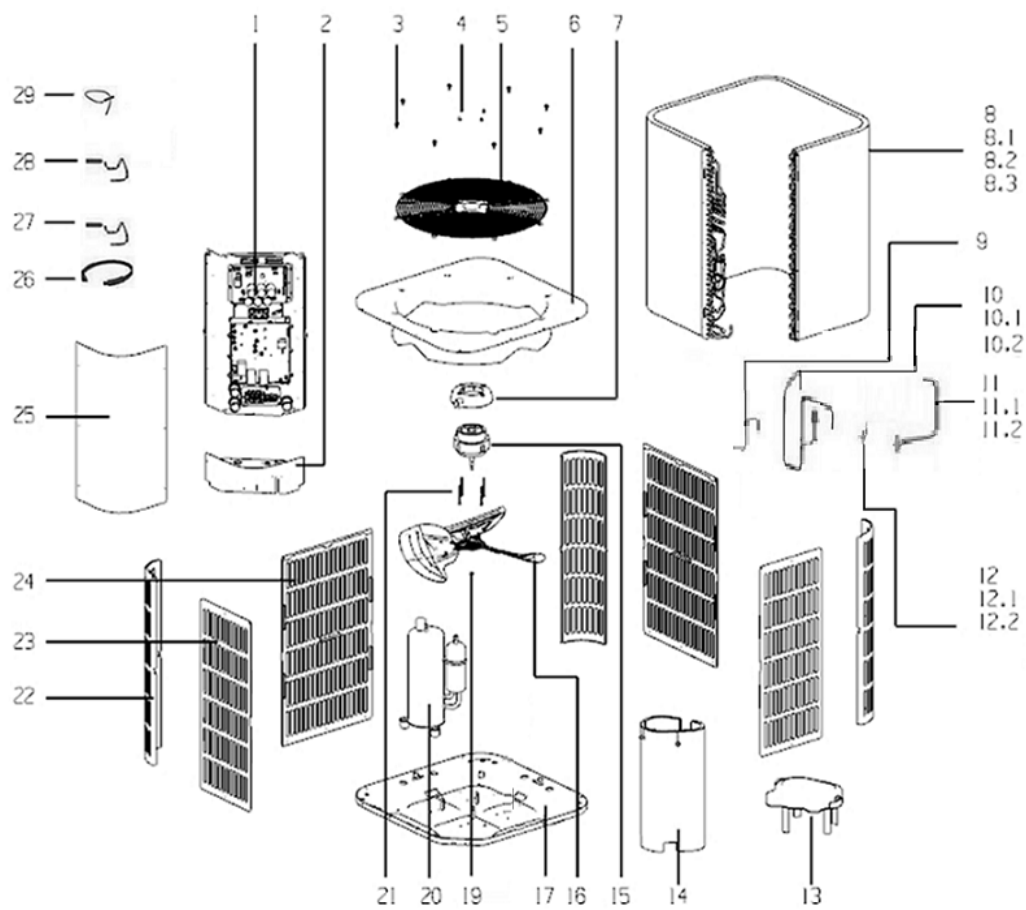


Exploded view and spare part list
 Model: YMSJYC048BAANB-X
 Voltage: 208/230-60-1





整机电路接线图

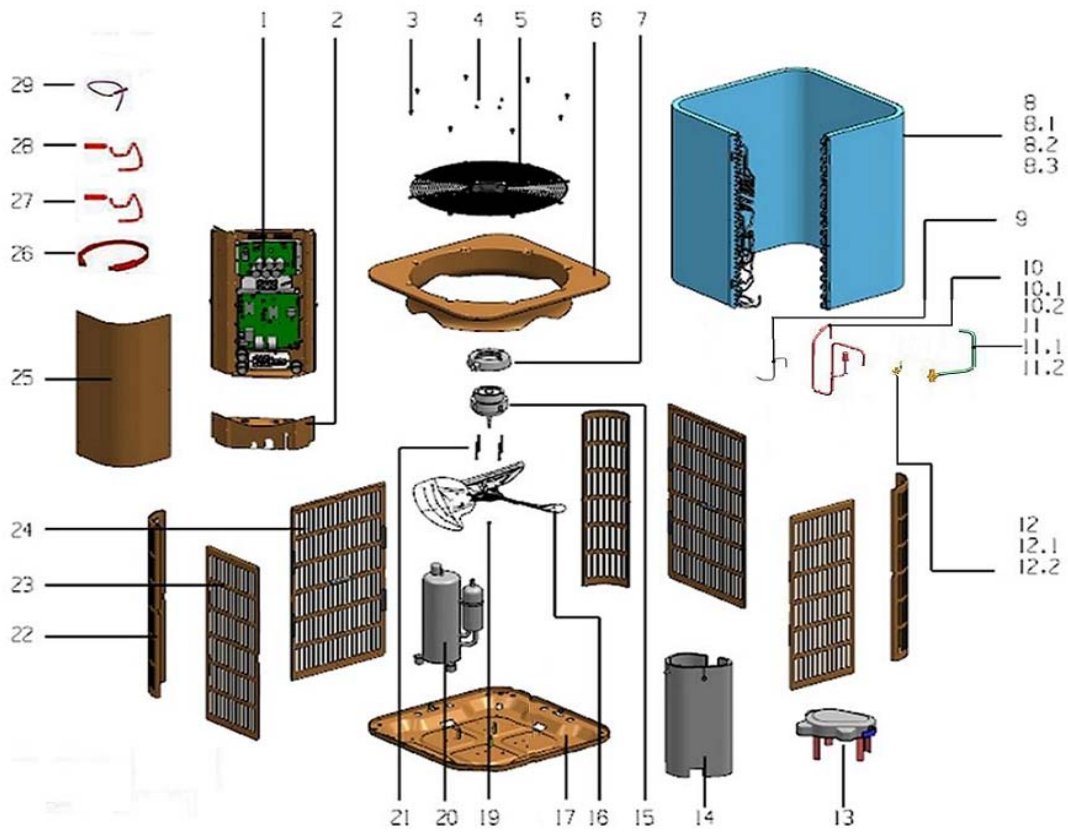
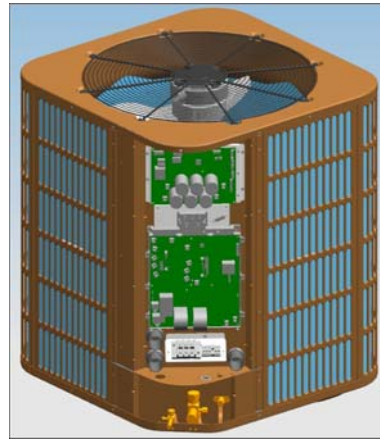
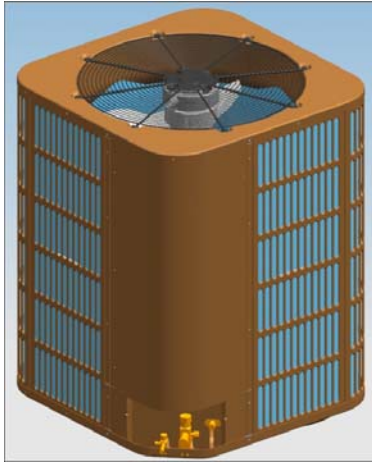


No.	Part Name	Quantity	BOM code	York Model	Remark
1	E-part box ass'y	1	203M375790158	YMSJYC048BAANB-X	
1.1	Main control board ass'y	1	201M375790096	YMSJYC048BAANB-X	
1.2	Three phase bridge	1	202M300500326	YMSJYC048BAANB-X	
1.3	Main control board ass'y	1	201M375890205	YMSJYC048BAANB-X	recommended
1.4	Wire joint, 5p	1	202M301400587	YMSJYC048BAANB-X	
1.5	Wire joint, 3p	1	202M301400593	YMSJYC048BAANB-X	
1.6	EMC Solenoid	6	202M301000016	YMSJYC048BAANB-X	
1.7	E-part installation combination ass'y	1	201M275890178	YMSJYC048BAANB-X	
1.8	Electrical inductance box ass'y	1	201M275890181	YMSJYC048BAANB-X	
1.9	Electric reactor	2	202M301001030	YMSJYC048BAANB-X	
2	Below side board ass'y	1	201M275290093	YMSJYC048BAANB-X	
3	Stainless steel bolts	8	202M501100866	YMSJYC048BAANB-X	
4	Cap nut	4	202M502000497	YMSJYC048BAANB-X	
5	Top cover veil	1	201M296090213	YMSJYC048BAANB-X	
6	Top cover assembly (SB3053, RoHS)	1	201M275590272	YMSJYC048BAANB-X	
7	Motor installation board ass'y	1	201M175990009	YMSJYC048BAANB-X	
8	Condenser part	1	201M575790169	YMSJYC048BAANB-X	
8.1	Condenser	1	201M575790170	YMSJYC048BAANB-X	
8.2	Condenser inlet pipe ass'y	1	201M675791049	YMSJYC048BAANB-X	
8.3	Condenser outlet pipeline ass'y	1	201M675791051	YMSJYC048BAANB-X	
9	Outlet pipe of condenser	1	201M675490367	YMSJYC048BAANB-X	
10	Exhaust pipe ass'y	1	201M675891040	YMSJYC048BAANB-X	
10.1	Pressure controller	1	202M301801106	YMSJYC048BAANB-X	
10.2	Exhaust pipe	1	201M675891041	YMSJYC048BAANB-X	
11	Low pressure valve ass'y	1	201M675891042	YMSJYC048BAANB-X	
11.1	Block valve	1	201M601601362	YMSJYC048BAANB-X	
11.2	Low pressure valve connection pipe	1	201M675891043	YMSJYC048BAANB-X	
12	High-pressure valve assembly	1	201M675290223	YMSJYC048BAANB-X	
12.1	Block valve	1	201M601601361	YMSJYC048BAANB-X	
12.2	High-pressure valve pipe	1	201M675290224	YMSJYC048BAANB-X	
13	Rubber Cap	1	202M75890004	YMSJYC048BAANB-X	
14	Sound insulation cotton	1	202M175890013	YMSJYC048BAANB-X	
15	Brushless DC Motor	1	202M400300559	YMSJYC048BAANB-X	recommended
16	Fan, 3 blade count, aluminum alloy + galvanized	1	201M200300245	YMSJYC048BAANB-X	
17	Chassis Parts	1	201M275490068	YMSJYC048BAANB-X	
19	Nut	1	202M502050059	YMSJYC048BAANB-X	
20	Compressor	1	201M400611148	YMSJYC048BAANB-X	recommended
21	Electrical installation bolt	4	202M501100925	YMSJYC048BAANB-X	
22	Supporting board	3	201M275790101	YMSJYC048BAANB-X	
23	Side board ass'y 2	2	201M275890051	YMSJYC048BAANB-X	
24	Side board ass'y 1	2	201M275890050	YMSJYC048BAANB-X	
25	Side board ass'y	1	201M275890177	YMSJYC048BAANB-X	
26	Compressor electric heater (with spring)	1	202M403101785	YMSJYC048BAANB-X	
27	Discharge Temp. sensor ass'y	1	202M301300124	YMSJYC048BAANB-X	recommended
28	Pipe Temp. sensor ass'y	1	202M301300753	YMSJYC048BAANB-X	recommended

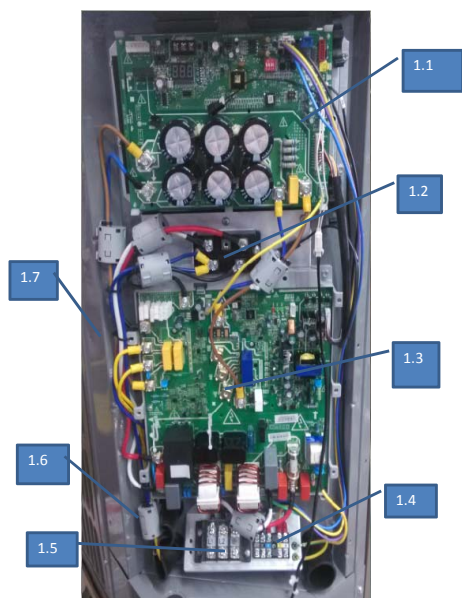
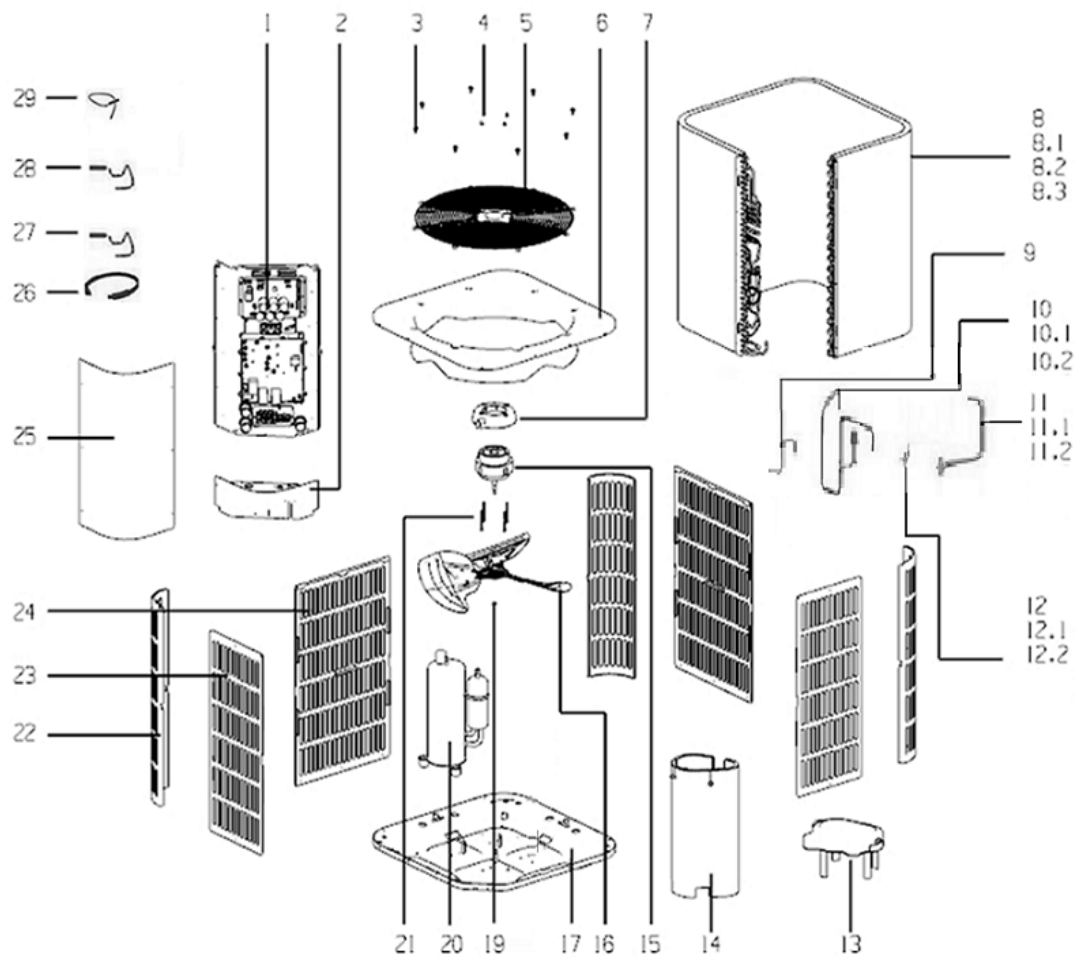
Exploded view and spare part list

Model: YMSJYC060BAANB-X

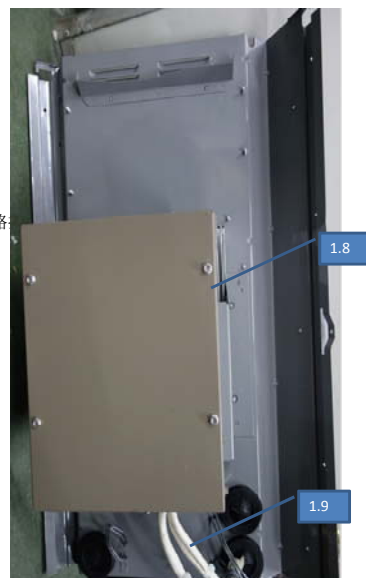
Voltage: 208/230-60-1



整机爆炸图1



整机电路



No.	Part Name	Quantity	BOM code	York Model	Remark
1	E-part box ass'y	1	203M375890223	YMSJYC060BAANB-X	
1.1	Main control board ass'y	1	201M375890200	YMSJYC060BAANB-X	recommended
1.2	Three phase bridge	1	202M300500326	YMSJYC060BAANB-X	recommended
1.3	Main control board ass'y	1	201M375890205	YMSJYC060BAANB-X	recommended
1.4	Wire joint, 5p	1	202M301400587	YMSJYC060BAANB-X	
1.5	Wire joint, 3p	1	202M301400593	YMSJYC060BAANB-X	
1.6	EMC Solenoid	6	202M301000016	YMSJYC060BAANB-X	
1.7	E-part installation combination ass'y	1	201M275890178	YMSJYC060BAANB-X	
1.8	Electrical inductance box ass'y	1	201M275890181	YMSJYC060BAANB-X	
1.9	Electric reactor	2	202M301001030	YMSJYC060BAANB-X	
2	Below side board ass'y	1	201M275290093	YMSJYC060BAANB-X	
3	Stainless steel bolts	8	202M501100866	YMSJYC060BAANB-X	
4	Cap nut	4	202M502000497	YMSJYC060BAANB-X	
5	Top cover veil	1	201M296090213	YMSJYC060BAANB-X	
6	Top cover assembly (SB3053, RoHS)	1	201M275590272	YMSJYC060BAANB-X	
7	Motor installation board ass'y	1	201M175990009	YMSJYC060BAANB-X	
8	Condenser part	1	201M575790169	YMSJYC060BAANB-X	
8.1	Condenser	1	201M575790170	YMSJYC060BAANB-X	
8.2	Condenser inlet pipe ass'y	1	201M675791049	YMSJYC060BAANB-X	
8.3	Condenser outlet pipeline ass'y	1	201M675791051	YMSJYC060BAANB-X	
9	Outlet pipe of condenser	1	201M675490367	YMSJYC060BAANB-X	
10	Exhaust pipe ass'y	1	201M675891040	YMSJYC060BAANB-X	
10.1	Pressure controller	1	202M301801106	YMSJYC060BAANB-X	
10.2	Exhaust pipe	1	201M675891041	YMSJYC060BAANB-X	
11	Low pressure valve ass'y	1	201M675891042	YMSJYC060BAANB-X	
11.1	Block valve	1	201M601601362	YMSJYC060BAANB-X	
11.2	Low pressure valve connection pipe	1	201M675891043	YMSJYC060BAANB-X	
12	High-pressure valve assembly	1	201M675290223	YMSJYC060BAANB-X	
12.1	Block valve	1	201M601601361	YMSJYC060BAANB-X	
12.2	High-pressure valve pipe	1	201M675290224	YMSJYC060BAANB-X	
13	Rubber Cap	1	202M775890004	YMSJYC060BAANB-X	
14	Sound insulation cotton	1	202M175890013	YMSJYC060BAANB-X	
15	Brushless DC Motor	1	202M400300559	YMSJYC060BAANB-X	recommended
16	Fan, 3 blade count, aluminum alloy + galvanized, D 23-5/8inch, 60DEG (60°), 1/2inch Shaft Bore, CW (along air flow direction)	1	201M200300245	YMSJYC060BAANB-X	
17	Chassis Parts	1	201M275490068	YMSJYC060BAANB-X	
19	Nut	1	202M502050059	YMSJYC060BAANB-X	
20	Compressor	1	201M400611148	YMSJYC060BAANB-X	recommended
21	Electrical installation bolt	4	202M501100925	YMSJYC060BAANB-X	
22	Supporting board	3	201M275790101	YMSJYC060BAANB-X	
23	Side board ass'y 2	2	201M275890051	YMSJYC060BAANB-X	
24	Side board ass'y 1	2	201M275890050	YMSJYC060BAANB-X	
25	Side board ass'y	1	201M275890177	YMSJYC060BAANB-X	
26	Compressor electric heater (with spring)	1	202M403101785	YMSJYC060BAANB-X	
27	Discharge Temp. sensor ass'y	1	202M301300124	YMSJYC060BAANB-X	recommended
28	Pipe Temp. sensor ass'y	1	202M301300753	YMSJYC060BAANB-X	recommended