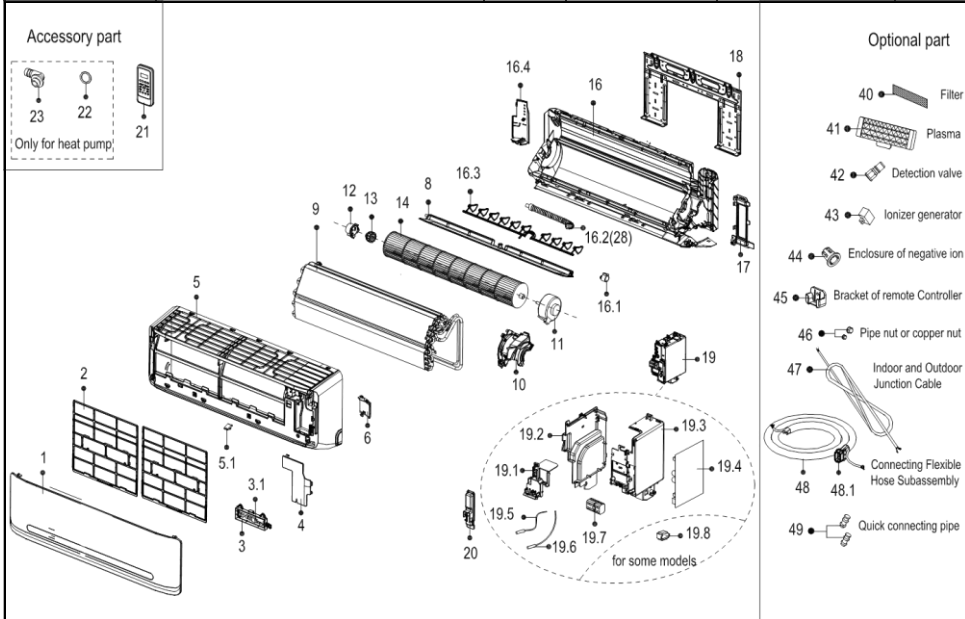


Exploded View



JCI Model:	YHKE09XJ6AMC-RX			
Factory Model:	22022011004687			
Power Supply:	208And230V_1Ph,FREQUENCY_60HZ	Export Time:	2016-01-05 22:46:30	

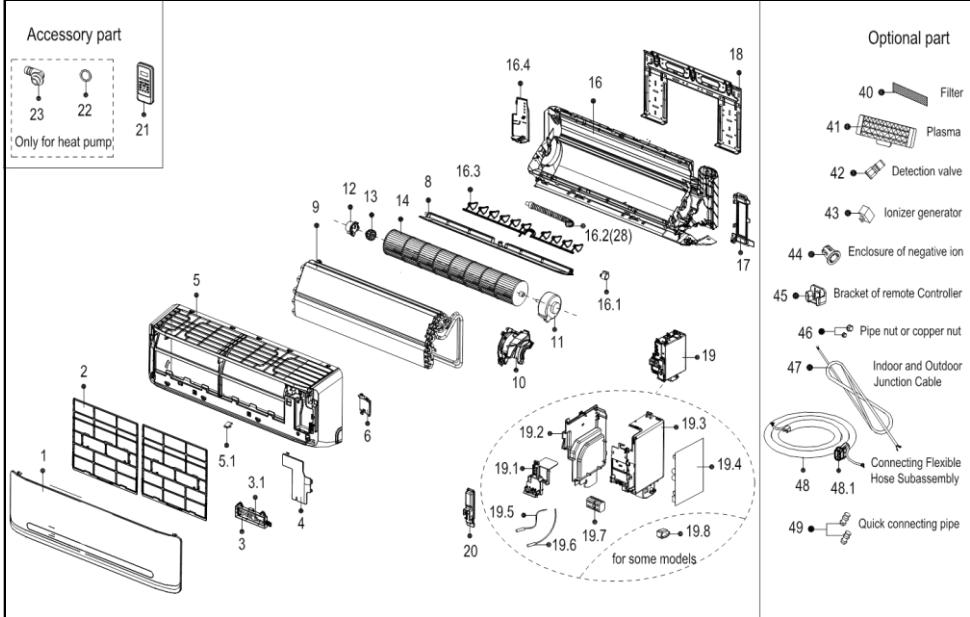


No.	Part Name	Quantity	BOM Code	Price	Remark
1	Panel assembly	1.0	121M22000001521		
2	Filter	2.0	121M00204000522		
3	Indicator board assembly of Split Unit	1.0	172M22000002878		
3.1	Display Panel Subassembly(Sticker)	1.0	171M22000006953		
4	E-Parts Cover Plate	1.0	121M22000006755		
5	frame assembly	1.0	121M22000001726		
5.1	Screw Cap	1.0	121M22000009477		
6	Right Cover Plate of Chassis	1.0	121M22000004587		
8	Wind Guide Assembly	1.0	121M22000005815		
9	Evaporator assembly	1.0	158M22000003677		
10	Motor Bearing Cover	1.0	121M22000005540		
11	Brushless DC Motor	1.0	110M02015000051		
12	Bearing sleeve	1.0	121M22000000350		
13	Bearing pedestal	1.0	126M22000000006		
14	Cross-flow Window Rotor.	1.0	121M00102000044		
16	Chassis assembly	1.0	121M22000011818		
16.1	stepper motor	1.0	110M02010000143		
16.3	Louver Assembly	1.0	121M22000000038		
16.4	Left cover of chassis	1.0	121M22000010098		
17	Pipe clamp board	1.0	121M22000012943		
18	Installation Plate	1.0	122M22000000018		
19	Electronic control box assembly	1.0	172M22000009970		
19.1	Upper Cover Board of Electrical Control Box	1.0	121M22000004577		
19.2	Left Side Plate of Electrical Control Box	1.0	121M22000004639		
19.3	Right Side Plate of E-Parts Box	1.0	121M22000004632		
19.4	Indoor main control board assembly	1.0	171M22000019549		
19.5	Room Temperature Sensor	1.0	112M01007000085		
19.6	Temperature Sensor	1.0	112M01007000322		
19.7	Wire holder	1.0	174M00401000094		
20	Electrical Control Box Cover	1.0	121M22000005020		
21	Remote Controller	1.0	173M17000001394		
21.1	Holder for remote controller	1.0	121M17000000104		
22	Seal	1.0	126M00701000039		
23	Extend Water Pipe	1.0	121M00509000061		
28	Drain Hose	1.0	121M00501000032		
40	Filter net of cold catalyzt	1.0	121M00204000685		
46	Brass Nut	1.0	155M00406000010		
46	Brass Nut	1.0	155M00406000016		

Exploded View



JCI Model:	YHKE12XJ6AMC-RX			
Factory Model:	22022011004161			
Power Supply:	208And230V_1Ph,FREQUENCY_60HZ	Export Time:	2016-01-05 22:50:40	

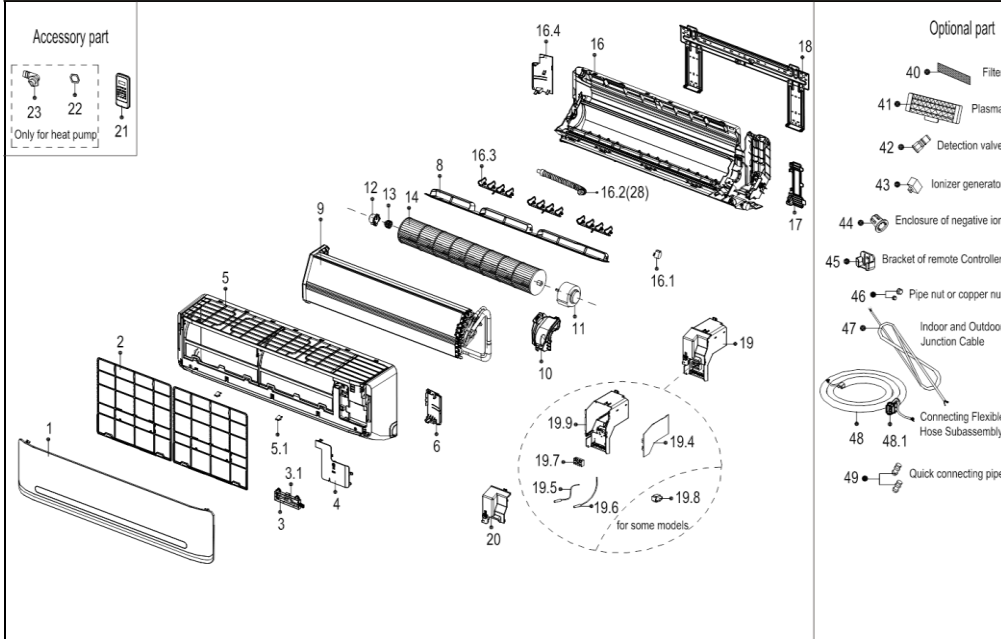


No.	Part Name	Quantity	BOM Code	Price	Remark
1	Panel assembly	1.0	121M22000001521		
2	Filter	2.0	121M00204000522		
3	Indicator board assembly of Split Unit	1.0	172M22000002878		
3.1	Display Panel Subassembly(Sticker)	1.0	171M22000006953		
4	E-Parts Cover Plate	1.0	121M22000006755		
5	frame assembly	1.0	121M22000001726		
5.1	Screw Cap	1.0	121M22000009477		
6	Right Cover Plate of Chassis	1.0	121M22000004587		
8	Wind Guide Assembly	1.0	121M22000005815		
9	Evaporator assembly	1.0	158M22000003601		
10	Motor Bearing Cover	1.0	121M22000005540		
11	Brushless DC Motor	1.0	110M02015000051		
12	Bearing sleeve	1.0	121M22000000350		
13	Bearing pedestal	1.0	126M22000000006		
14	Cross-flow Window Rotor.	1.0	121M00102000044		
16	Chassis assembly	1.0	121M22000011818		
16.1	stepper motor	1.0	110M02010000143		
16.3	Louver Assembly	1.0	121M22000000038		
16.4	Left cover of chassis	1.0	121M22000010098		
17	Pipe clamp board	1.0	121M22000012943		
18	Installation Plate	1.0	122M22000000018		
19	Electronic control box assembly	1.0	172M22000009469		
19.1	Upper Cover Board of Electrical Control Box	1.0	121M22000004577		
19.2	Left Side Plate of Electrical Control Box	1.0	121M22000004639		
19.3	Right Side Plate of E-Parts Box	1.0	121M22000004632		
19.4	Indoor main control board assembly	1.0	171M22000018850		
19.5	Room Temperature Sensor	1.0	112M01007000085		
19.6	Temperature Sensor	1.0	112M01007000322		
19.7	Wire holder	1.0	174M00401000094		
20	Electrical Control Box Cover	1.0	121M22000005020		
21	Remote Controller	1.0	173M17000001394		
21.1	Holder for remote controller	1.0	121M17000000104		
22	Seal	1.0	126M00701000039		
23	Extend Water Pipe	1.0	121M00509000061		
28	Drain Hose	1.0	121M00501000032		
40	Filter net of cold catalyst	1.0	121M00204000685		
46	Brass Nut	1.0	155M00406000012		
46	Brass Nut	1.0	155M00406000016		

Exploded View



JCI Model:	YHKE18XJ6AMC-RX			
Factory Model:	22022011004162			
Power Supply:	208And230V_1Ph,FREQUENCY_60HZ	Export Time:	2016-01-05 22:56:11	

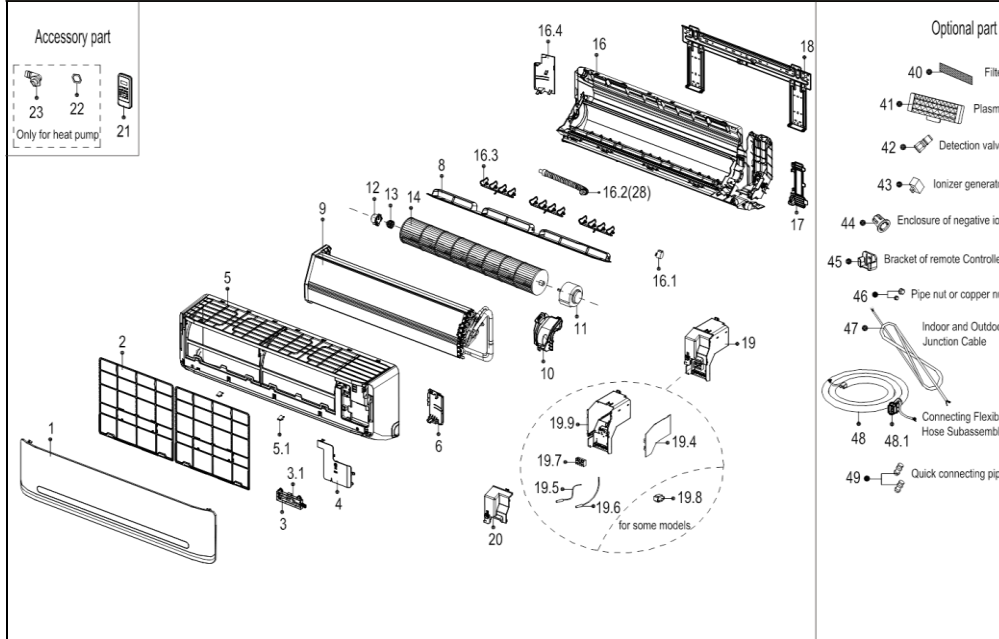


No.	Part Name	Quantity	BOM Code	Price	Remark
1	Panel assembly	1.0	121M22000001602		
2	Filter	2.0	121M00204000461		
3	Indicator board assembly of Split Unit	1.0	172M22000002837		
3.1	Display Panel Subassembly(Sticker)	1.0	171M22000006953		
4	E-Parts Cover Plate	1.0	121M22000006733		
5	frame assembly	1.0	121M22000001956		
5.1	Screw Cap	2.0	121M22000008242		
6	Right Cover Plate of Chassis	1.0	121M22000004608		
8	Wind Guide	1.0	121M22000006335		
9	Evaporator assembly Gas valve assembly	1.0	158M22000003676		
10	Motor Bearing Cover	1.0	121M22000005512		
11	Brushless DC Motor	1.0	110M02015000094		
12	Bearing sleeve	1.0	121M22000000350		
13	Bearing pedestal	1.0	126M22000000006		
14	Cross-flow window rotor	1.0	121M00102000018		
16	Chassis assembly	1.0	121M22000011879		
16.1	stepper motor	1.0	110M02010000049		
16.3	Louver	3.0	121M22000000135		
16.4	Left Cover Plate of Chassis	1.0	121M22000004614		
17	Pipe clamp board	1.0	121M22000012942		
18	Installation Plate Subassembly	1.0	122M22000000026		
19	E-Parts Box assembly of Split Indoor Unit	1.0	172M22000009479		
19.4	Indoor Main Control Board Subassembly (Sticker)	1.0	171M22000018869		
19.5	Room Temperature Sensor	1.0	112M01007000085		
19.6	Temperature Sensor	1.0	112M01007000126		
19.7	Wire holder	1.0	174M00401000006		
19.9	Electrical Control Box	1.0	121M22000007845		
20	Electrical Control Box Cover	1.0	121M22000005024		
21	Remote Controller	1.0	173M17000001394		
21.1	Holder for remote controller	1.0	121M17000000104		
22	Seal	1.0	126M00701000039		
23	Extend Water Pipe	1.0	121M00509000061		
28	Drain Hose	1.0	121M00501000032		
40	Filter net of cold catalyst	1.0	121M00204000685		
46	Brass Nut	1.0	155M00406000012		
46	Brass Nut	1.0	155M00406000016		

Exploded View



JCI Model:	YHKE24XJ6AMC-RX			
Factory Model:	22022011004100			
Power Supply:	208And230V_1Ph,FREQUENCY_60HZ	Export Time:	2016-01-05 22:59:49	

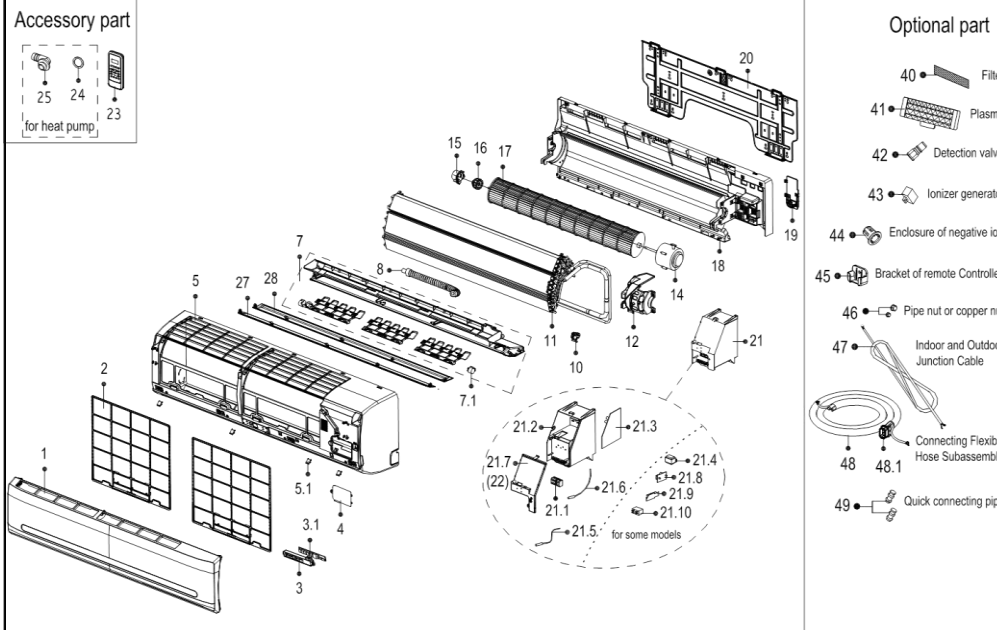


No.	Part Name	Quantity	BOM Code	Price	Remark
1	Panel assembly	1.0	121M22000001602		
2	Filter	2.0	121M00204000461		
3	Indicator board assembly of Split Unit	1.0	172M22000002837		
3.1	Display Panel Subassembly(Sticker)	1.0	171M22000006953		
4	E-Parts Cover Plate	1.0	121M22000006733		
5	frame assembly	1.0	121M22000001956		
5.1	Screw Cap	2.0	121M22000008242		
6	Right Cover Plate of Chassis	1.0	121M22000004608		
8	Wind Guide	1.0	121M22000006335		
9	Evaporator assembly Gas valve assembly	1.0	158M22000003638		
10	Motor Bearing Cover	1.0	121M22000005512		
11	Brushless DC Motor	1.0	110M02015000094		
12	Bearing sleeve	1.0	121M22000000350		
13	Bearing pedestal	1.0	126M22000000006		
14	Cross-flow window rotor	1.0	121M00102000018		
16	Chassis assembly	1.0	121M22000011879		
16.1	stepper motor	1.0	110M02010000049		
16.3	Louver	3.0	121M22000000135		
16.4	Left Cover Plate of Chassis	1.0	121M220000004614		
17	Pipe clamp board	1.0	121M22000012942		
18	Installation Plate Subassembly	1.0	122M22000000026		
19	E-Parts Box assembly of Split Indoor Unit	1.0	172M220000009476		
19.4	Indoor main control board assembly	1.0	171M22000018862		
19.5	Room Temperature Sensor	1.0	112M01007000085		
19.6	Temperature Sensor	1.0	112M01007000126		
19.7	Wire holder	1.0	174M00401000006		
19.9	Electrical Control Box	1.0	121M22000007845		
20	Electrical Control Box Cover	1.0	121M22000005024		
21	Remote Controller	1.0	173M17000001394		
21.1	Holder for remote controller	1.0	121M17000000104		
22	Seal	1.0	126M00701000039		
23	Extend Water Pipe	1.0	121M00509000061		
28	Drain Hose	1.0	121M00501000032		
40	Filter net of cold catalyst	1.0	121M00204000685		
46	Brass Nut	1.0	155M00406000003		
46	Brass Nut	1.0	155M00406000010		

Exploded View



JCI Model:	YHKE30XJ6AMC-RX			
Factory Model:	22022011004098			
Power Supply:	208And230V_1Ph,FREQUENCY_60HZ	Export Time:	2016-01-05 23:03:44	

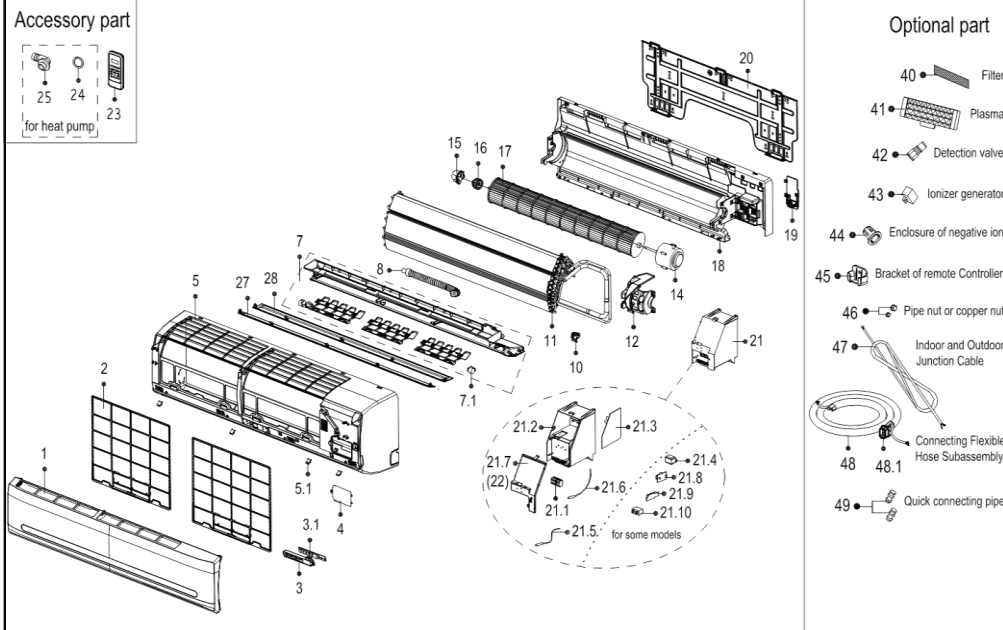


No.	Part Name	Quantity	BOM Code	Price	Remark
1	Panel assembly	1.0	12122000001101		
2	Filter	2.0	12100204000456		
3	Indicator board assembly of Split Unit	1.0	17222000002719		
3.1	Display Panel Subassembly(Sticker)	1.0	17122000006952		
4	E-Parts Cover Plate	1.0	12122000006694		
5	Panel frame assembly	1.0	12122000001931		
5.1	Screw Cap	4.0	12122000006272		
7	Air outlet assembly	1.0	12122000011921		
7.1	stepper motor	1.0	11002010000004		
8	Drain Hose	1.0	12100501000021		
10	Temperature Sensing Element Fixing clip	1.0	12100303000008		
11	Evaporator assembly	1.0	15822000003718		
12	Motor Bearing Cover	1.0	12122000005475		
14	Brushless DC Motor	1.0	11002015000094		
15	Bearing sleeve	1.0	12122000000350		
16	Bearing pedestal	1.0	12622000000006		
17	Cross-flow window rotor	1.0	12100102000084		
18	Chassis Assembly	1.0	12122000003909		
19	Pipe Pressing Board	1.0	12122000000460		
20	Installation Plate	1.0	12222000000029		
21	E-Parts Box assembly of Split Indoor Unit	1.0	17222000009475		
21.1	Wire holder	1.0	17400401000006		
21.2	Electrical Control Box	1.0	12122000004617		
21.3	Indoor main control board assembly	1.0	17122000018860		
21.5	Room Temperature Sensor	1.0	11201007000088		
21.6	Temperature Sensor	1.0	11201007000322		
21.7	Electrical Control Box Cover	1.0	12122000005040		
23	Remote Controller	1.0	17317000001394		
23.1	Holder for remote controller	1.0	12117000000104		
24	Seal	1.0	12600701000039		
25	Extend Water Pipe	1.0	12100509000061		
27	Wind Guide Top	1.0	12122000006106		
28	Wind Guide Bottom	1.0	12122000008092		
40	Filter net of cold catalyst	1.0	12100204000685		
46	Brass Nut	1.0	15500406000003		
46	Brass Nut	1.0	15500406000010		

Exploded View



JCI Model:	YHKE36XJ6AMC-RX			
Factory Model:	22022011004099			
Power Supply:	208And230V_1Ph,FREQUENCY_60HZ	Export Time:	2016-01-05 23:08:11	



No.	Part Name	Quantity	BOM Code	Price	Remark
1	Panel assembly	1.0	121M22000001101		
2	Filter	2.0	121M00204000456		
3	Indicator board assembly of Split Unit	1.0	172M22000002719		
3.1	Display Panel Subassembly(Sticker)	1.0	171M22000006952		
4	E-Parts Cover Plate	1.0	121M22000006694		
5	Panel frame assembly	1.0	121M22000001931		
5.1	Screw Cap	4.0	121M22000006272		
7	Air outlet assembly	1.0	121M22000011921		
7.1	stepper motor	1.0	110M02010000004		
8	Drain Hose	1.0	121M00501000021		
10	Temperature Sensing Element Fixing clip	1.0	121M00303000008		
11	Evaporator assembly	1.0	158M22000003718		
12	Motor Bearing Cover	1.0	121M22000005475		
14	Brushless DC Motor	1.0	110M02015000094		
15	Bearing sleeve	1.0	121M22000000350		
16	Bearing pedestal	1.0	126M22000000006		
17	Cross-flow window rotor	1.0	121M00102000084		
18	Chassis Assembly	1.0	121M22000003909		
19	Pipe Pressing Board	1.0	121M22000000460		
20	Installation Plate	1.0	122M22000000029		
21	E-Parts Box assembly of Split Indoor Unit	1.0	172M22000009480		
21.1	Wire holder	1.0	174M00401000006		
21.2	Electrical Control Box	1.0	121M220000004617		
21.3	Indoor main control board assembly	1.0	171M220000018871		
21.5	Room Temperature Sensor	1.0	112M01007000088		
21.6	Temperature Sensor	1.0	112M01007000322		
21.7	Electrical Control Box Cover	1.0	121M22000005040		
23	Remote Controller	1.0	173M17000001394		
23.1	Holder for remote controller	1.0	121M17000000104		
24	Seal	1.0	126M00701000039		
25	Extend Water Pipe	1.0	121M00509000061		
27	Wind Guide Top	1.0	121M22000006106		
28	Wind Guide Bottom	1.0	121M22000008092		
40	Filter net of cold catalyst	1.0	121M00204000685		
46	Brass Nut	1.0	155M00406000003		
46	Brass Nut	1.0	155M00406000010		